

# GUIDE PLAN

POWERED BY



pro/sud

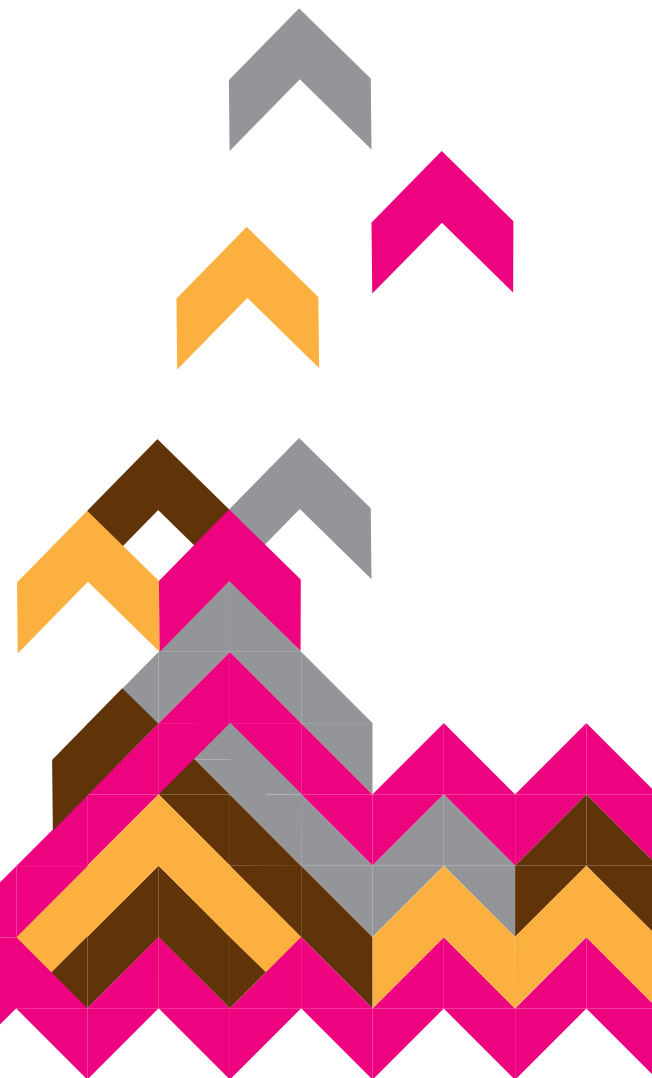
10 – 11  
OCTOBER 2020  
Luxembourg - Belval



AGORA  
RED ROCK  
CHALLENGE



DIGITAL  
EDITION



## FOREWORD

Discover the industrial heritage, the Red Rocks and the quite unique nature of this southern region of Luxembourg. All in a sporty and fun way. With friends or family. Agora Red Rock Challenge brings all this together in a single event. An event that marks the image of the southern region of Luxembourg and particularly of Belval. Despite the health situation making it more difficult to hold the events, we hope that this year, for this special edition the participants will still be able to discover, during the races, places where the steel industry heritage has metamorphosed to give rise to new and innovative activities where the old meets the modern and where new living spaces are created amid industrial remains.

As the planner/developer of the Belval site, with the main mission of planning and developing brownfield sites, it seemed obvious to Agora that it should be fully involved in the enhancement of this diversity between natural and urban landscapes. We would like to assure the organisers of our full support for this edition, and that we all meet again next year for an even greater challenge.

Take care of yourself and your loved ones and see you in 2021.

Vincent Delwiche, CEO of Agora  
[www.agora.lu](http://www.agora.lu)

Agora Red Rock Challenge is back for a new special edition and its organization will be particular in many aspects. Even if the coronavirus has invited itself to the menu of our daily lives, it is important to hold sports and cultural activities whenever possible, taking into account sanitary precautions. The Agora Red Rock Challenge race attracts runners, walkers and cyclists from all over Luxembourg and neighbouring countries. This event is a real moment of conviviality ; bringing together, in the open air, people from all walks of life, sportsmen and amateurs. As well, it allows you to appreciate the natural and urban landscapes specific to the southern part of Luxembourg. An opportunity to showcase the richness of our territory. For all these reasons, the PRO-SUD trade union supports this regional and popular action. We would like to thank the organisers and the many volunteers for their commitment to sport, a creator of social links, but also of the brand image of the South.

Let us wish great success to this new edition Agora Red Rock Challenge 2020 and full success to all the participants.

Anouk Thill, President of PRO-SUD  
[www.prosud.lu](http://www.prosud.lu)

## RED ROCK CHALLENGE 2020

### DISCOVER THE RED ROCK REGION

The 8th Edition of the Red Rock Challenge will be on 10 & 11 October 2020.

### WHAT DOES THE RED ROCK CHALLENGE STAND FOR?

The Red Rock Challenge is a combination of sporting and cultural event in southern Luxembourg. Whether you are for Mountain biking or Trail Run, this challenge offers the participants to discover the great wealth of industrial and natural heritage of the communes of the former mining area.

### DISCOVER SOUTHERN LUXEMBOURG

The Red Rock Challenge 2020 departs from Belval and connects, like every year, the region's major tourist points such as Little Italy in Dudelange, the National Mining and Iron Museum in Rumelange, the Information Centre Ellergronn in Esch/Alzette and the Industrial and Railway Park Fond-de-Gras in Differdange/Pétange.

The various tracks will lead the participants through the natural reserves of Haard, Hesselbiert, Steebiart, Lalléngertbiert and Giele Botter to arrive at the Lycée Belval.

### WHO CAN PARTICIPATE?

The Red Rock Challenge is open to people of all ages\* and all levels. Participants can register individually. All participants have the opportunity to take part in 1 event or to combine 2 different events one on Saturday and the second one on Sunday. Departures will be adjusted to allow participants of all levels to manage their performances individually.

\*General rules , age restrictions

## WHAT WILL BE NEW?

Challenge yourself,  
Discover red rock region!

For this Special Digital edition there will be :

- Full signposted tracks as every year
- NO time measurement
- NO fixed hour to start
- NO refreshment points
- NO volunteers on the track to guide you
- NO shower & bike wash
- NO food & drinks at the finishing line

**DIGITAL  
EDITION**

But, there are good news too:

A big part of the benefits will go to an association fighting childhood cancer (**Fondation Kribskrank Kanner**).

There will be no volunteers during this Special Covid Edition.  
We cannot be held responsible if too many people mix themselves up!  
Please respect the sanitary rules from the Luxembourgish government.

PLEASE, respect the local COVID-19 RULES!  
Always ensure social distance of min. 2m otherwise wear your mask!

### REGISTRATION

Only online registration will be possible until the last moment:  
<https://portal.mikatiming.de/event/rr-challenge/2020/en/>

### DIGITAL CHALLENGE

Registering will be mandatory! Please note that you cannot register onsite. Each participant has to register online and will get a certificate and a medal after the edition... To prove your participation, you have to upload your GPS data (Garmin, Strava, Komoot ...). Read more on the REGULATION for the details.

## WHAT TO DO DURING THE EVENT?

This year's concept of the Agora Red Rock Challenge is about Fun, Charity and Sightseeing instead of competing and winning. A little different, but come on this is 2020, right?

### HOW TO PARTICIPATE

Please subscribe to the event of your choice via this link (mandatory): <https://portal.mikatiming.de/event/rr-challenge/2020/en/>

On the event day, you can start at the time you like, there is no general start time foreseen to avoid a busy start and crowded trails. Please track your race and upon arrival you can upload your GPS data on a dedicated page (see REGULATION) However, please be informed that there will be no ranking.

### FEES AND CHARITY

The fees are of course reduced this year. The participation fee is fixed at 10€ (15€ 2 Day MTB Challenge) and we are happy to inform you, that a fixed amount of your inscription fees will be donated to the association "Fondation Kribskrank Kanner".

### REAL STEEL

Every participant will receive a medal after the event. In respect to the sanitary crisis we will send the medal to you some weeks after the event.

### WHERE DO I FIND THE TRACKS?

Every track can be downloaded from our web page in multiple formats : [www.rr-challenge.lu](http://www.rr-challenge.lu)

### WHEN CAN I FIND THE TRACK SIGNALISATION?

You can find the signalisation for both MTB tracks during the 10th and 11th October. Thus, you can decide to participate on Saturday or Sunday.

### VISIT THE BLAST FURNACE IN BELVAL !

A beautifully arranged new urban area that integrates the industrial remains awaits you. The blast furnace «A» is open to visitors until the platform of the bigmouth to 40 m of height. Access is by foot on the stairs. Registration required: [visite@fonds-belval.lu](mailto:visite@fonds-belval.lu)

**Address:** Halle des poches à fonte/ avenue du Rock'n'Roll, L-4361 Esch-sur- Alzette

**Info:** Le Fonds Belval, tél. 00352 26 840-1  
[www.fonds-belval.lu/visite\\_guidee\\_fr](http://www.fonds-belval.lu/visite_guidee_fr)

## REGULATION

### BIB NUMBER

There will be no bib-number and no chip for this special Covid edition.

### RESULTS/CHRONOMETRY

There will be no time measurement. All the tracks can be done in tour modus. However, you can enter your result yourself online as follows:

1. Call up the list of results:  
<https://redrockchallenge-luxemburg.r.mikatiming.de/2020/>
2. Enter your name and/or your event and call up your result by clicking your name.
3. Select «Edit your result» and log in with the following data:  
Registration ID/Last name (you will find your Registration ID in the header of your registration confirmation)
4. Enter your distance and the time required here. You are also welcome to upload proof (e.g. screenshot from your personal tracking app: Garmin, Strava, Polar, ...).

### HELMET / EQUIPMENT

Participants must ensure that their equipment is in good condition. E-bikes are allowed for the MTB tours. Wearing a helmet is mandatory. The organizer of the Red Rock Challenge disclaims all liability for any accident, injury or property damage. The organizer shall in no event be liable for physical injury and / or property related to a fall, for whatever reason.

### EVENT REGULATIONS

The maximum running time for each day is defined (18:00). Participants wishing to continue beyond this time frame will be subject to the rules of the road and finish the track under their own responsibility. All participants are asked to remain vigilant on public roads and pay attention to traffic since cars will continue to operate on the route.

### RESPECT OF THE ENVIRONMENT/NATURE

Participants are asked to respect the environment. All waste must remain in the staging area. Participants are requested not to leave the marked trails.

### CLOAKROOM / BIKE PARK (CD)

This year there will be no cloakroom / shower area at your disposal due at the actual sanitary crisis.

### HEALTH

Participants take part in the competition at their own responsibility. The organizer cannot be held responsible for any accident or event caused by bad health or by individual gear. Participants who decide to abandon the event must ensure to find their way to the starting point or car. We cannot offer to shuttle you back during the actual crisis. No refund will be paid in case of illness.

### CANCELLATION OF THE EVENT

In case of force majeure, natural disasters or other circumstances that endanger the safety of the participants, the organizers reserve the right to cancel the event without any refund to the participants.

### AGE RESTRICTIONS

Each participant recognizes and will respect the general age restrictions as set by the FLA, FLTRI and FSCL for endurance races.

### MEDIA

Each participant allows Red Rock Challenge asbl to use his picture, audio and video recordings for marketing terms.

### FINAL REMARKS

Participants acknowledge that they have read these regulations and accept all the clauses.

## PARTNERS

### MAIN PARTNERS

Agora (partenaire Gold) > [www.agora.lu](http://www.agora.lu)  
Pro-sud (partenaire Region) > [www.prosud.lu](http://www.prosud.lu)

### FINANCIAL PARTNERS

Asport > [www.asport.lu](http://www.asport.lu)  
Emile Weber > [www.voyages-weber.lu](http://www.voyages-weber.lu)  
Ford Luxmotor > [www.luxmotor.lu](http://www.luxmotor.lu)  
Ministère de l'économie / Direction générale du tourisme  
> [meco.gouvernement.lu](http://meco.gouvernement.lu)  
Sudgaz > [www.sudgaz.lu](http://www.sudgaz.lu)

### CO-PARTNERS

Cercle Athlétique Belvaux > [www.cab.lu](http://www.cab.lu)  
Cercle Athlétique Fola > [www.cafola.lu](http://www.cafola.lu)  
Cycling for Health > [www.cycling4health.lu](http://www.cycling4health.lu)  
Driebergse Tourclub > [www.dtcnet.nl](http://www.dtcnet.nl)  
Team Toproad > [www.toproad.lu](http://www.toproad.lu)

### EVENT PARTNER

Centre d'Accueil Ellergronn > [www.environnement.public.lu](http://www.environnement.public.lu)  
Delhaize Belval > [www.delhaize.lu](http://www.delhaize.lu)  
Fit Doheem > [www.fitdoheem.lu](http://www.fitdoheem.lu)  
Fonds Belval > [www.fonds-belval.lu](http://www.fonds-belval.lu)  
FSCL > [www.fscl.lu](http://www.fscl.lu)  
Fox beer > [www.foxbeer.lu](http://www.foxbeer.lu)  
Lëtzbuerger Guiden a Scouten > [lgs.lu](http://lgs.lu)  
Lycée Belval > [www.lbv.lu](http://www.lbv.lu)  
Minett Park > [www.minettpark.lu](http://www.minettpark.lu)  
Musée National de Mines de Fer Luxembourgeoises > [www.mnm.lu](http://www.mnm.lu)

### LOGISTIQUE & COMMUNICATION

Fiduciaire Muller & Associés > [www.paddock.eu](http://www.paddock.eu)  
Fontana.lu > [www.fontana.lu](http://www.fontana.lu)  
Sensity.lu > [Sensity.lu](http://Sensity.lu)

## PROGRAM

### TRAIL RUN DAY

#### Saturday 10/10/2020

TRAIL RUN 10.3 km  
09:30 Track open & checked  
Start : Lycée Belval / Finish: Lycée Belval

MTB 39.5 km  
09:30 Track open & checked  
Start / Finish: Lycée Belval (First part of the 2 Day MTB Challenge)

End 18:00

Note: Run tracks > all tracks from Saturday!  
-

### MTB DAY

#### Sunday 11/10/2020

MTB 38.8 km  
9:30 Track open & checked  
Start / Finish: Lycée Belval (Tour)

MTB 61.3 km  
9:30 Track open & checked  
Start / Finish: Lycée Belval (Tour)

MTB Marathon 75 km  
9:30 Track open & checked  
Start / Finish: Lycée Belval (Tour) (Second part of the 2 Day MTB Challenge)

End 18:00

## CONTACT

INFO@RR-CHALLENGE.LU  
WWW.RR-CHALLENGE.LU  
TEL : +352 621 352 801

4, RUE DU CIMETIÈRE  
L-3913 MONDERCANGE  
LUXEMBOURG

POST: LU691111 7007 7951 0000  
RCSL: F8736

## IMPRESSUM

**Editor**  
Red Rock Challenge asbl

**General Coordination**  
Marc Bourscheid coordination

**Visual Concept**  
Sensity

ALL RIGHT RESERVED.  
NO PART OF THESE PAGES, EITHER TEXT OR IMAGE  
MAY BE USED FOR ANY PURPOSE OTHER THAN PERSONAL USE.

### SUDGAZ SUPPORTS RED ROCK CHALLENGE

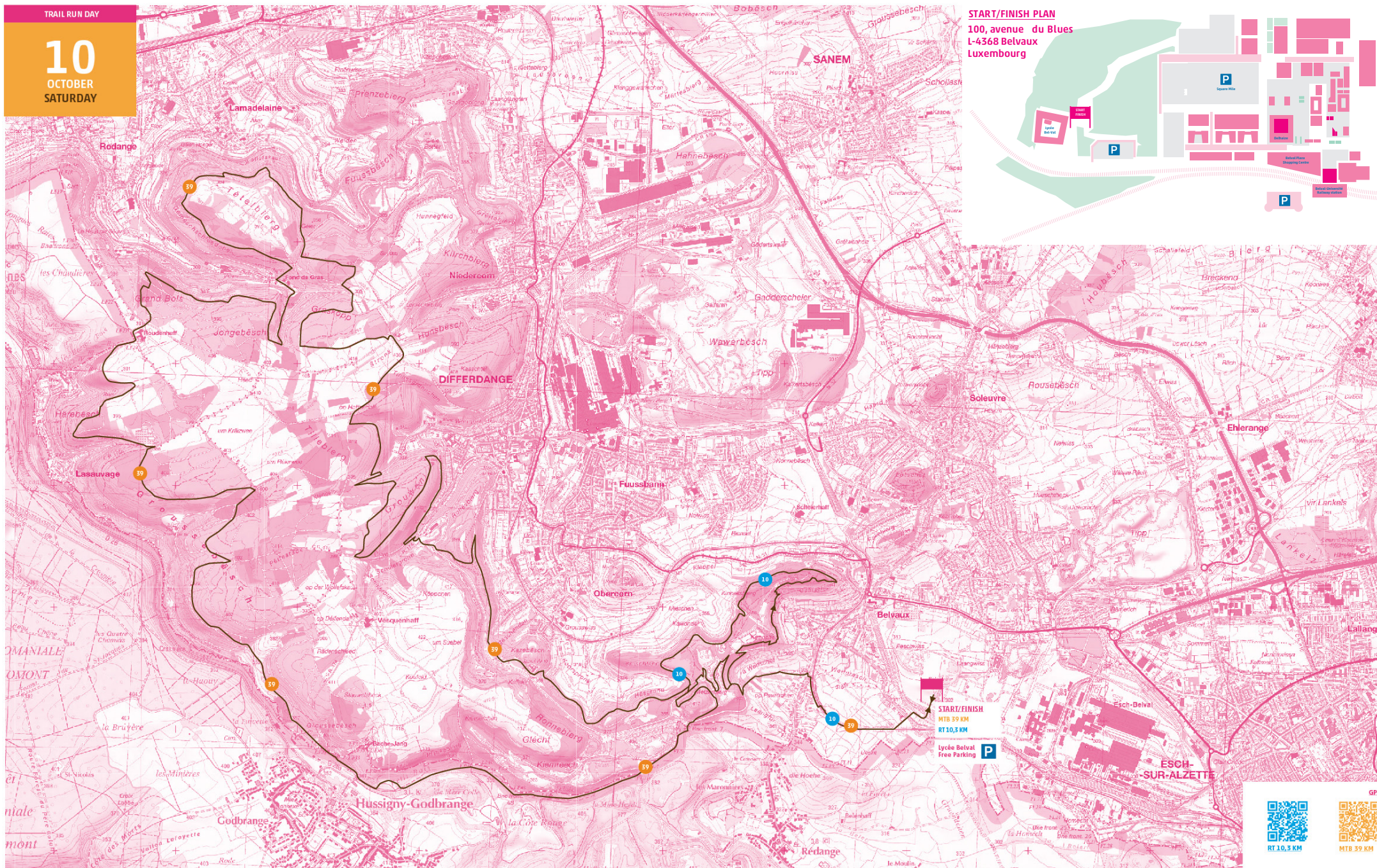


→   
ÉCOLOGIQUE - CONFORTABLE - FIABLE  
→ **Le choix durable.**



TRAIL RUN DAY

10  
OCTOBER  
SATURDAY





# 11

OCTOBER  
SUNDAY

START/FINISH  
MTB 38,9 KM  
MTB 61,3 KM  
MTB 75 KM

Lycée Belval  
Free Parking

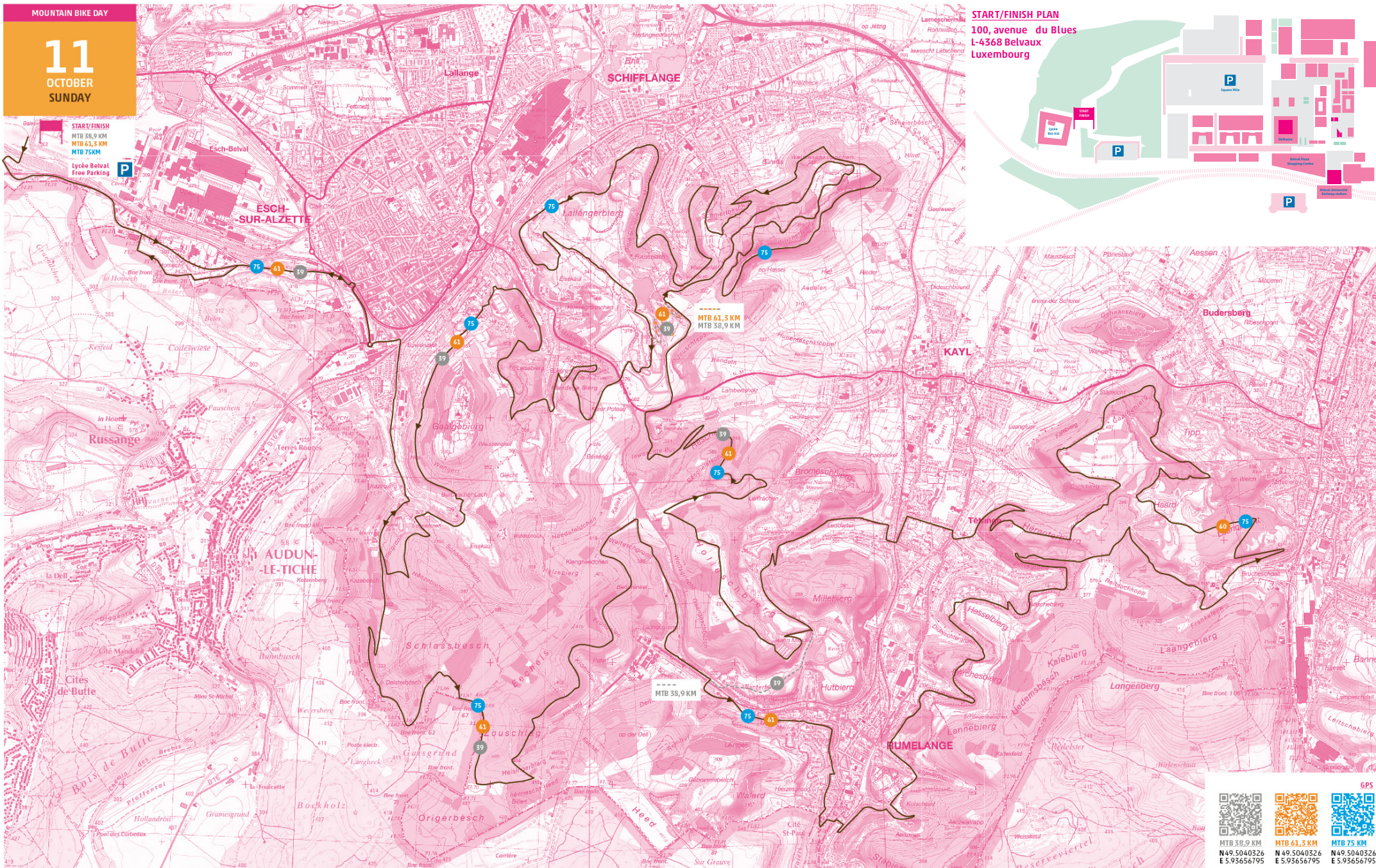
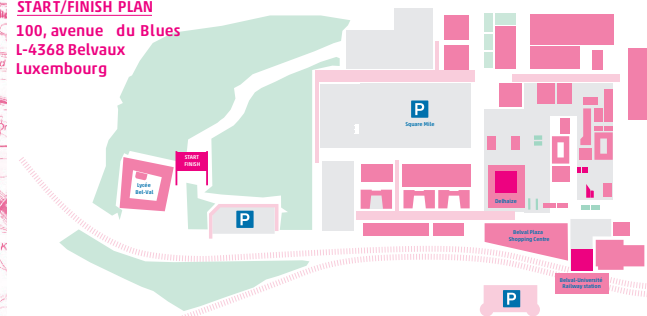


ESCH-SUR-ALZETTE

SCHIFFLANGE

## START/FINISH PLAN

100, avenue du Blues  
L-4368 Belvaux  
Luxembourg



MTB 61,3 KM

MTB 38,9 KM

MTB 38,9 KM



MTB 38,9 KM  
N 49.5040326  
E 5.93656795



MTB 61,3 KM  
N 49.5040326  
E 5.93656795



MTB 75 KM  
N 49.5040326  
E 5.93656795