

GUIDE PLAN

POWERED BY



**09 – 10
OCTOBER 2021**
Luxembourg - Belval

PRINTABLE VERSION



FOREWORD

Discover the industrial heritage, the Red Rocks and the quite unique nature of the southern region of Luxembourg. All in a sporty and fun way. With friends or family. AGORA RED ROCK CHALLENGE brings all this together and we look forward to seeing you there. This event, which is symbolic of the image of the southern region of Luxembourg and particularly of BELVAL, was absent in 2020. We hope that the sporting and cultural craze will resume with renewed vigour this year and will spread beyond the borders of the Grand Duchy. As the developer of the BELVAL site, and with the main mission of planning and developing brownfield sites, it is obvious to AGORA that it should fully support the RED ROCK CHALLENGE in its sporting strategy to enhance this diversity between natural and urban landscapes. We hope that, during the races, trails and walks, all entrants will be able to rediscover the places where the steel industry heritage has metamorphosed. These new living spaces, born of industrial remains, continue to grow and attract new activities. We wish the organisers the greatest success for this 2021 event. And the entrants a lot of pleasure in rediscovering this changing and multifaceted region.

François Dorland
General Manager of AGORA
www.agora.lu

The Syndicate PRO-SUD has been supporting the Red Rock Challenge for 9 years now. This sporting event allows experienced and novice participants to enjoy the paths of the southern region, which has been recognised by UNESCO as a biosphere reserve in 2020. Its cycling and running events allow participants to appreciate the diversity of the ever-changing natural and urban landscapes and the richness of our beautiful MINETT UNESCO BIOSPHERE. Through sport, southern Luxembourg and its cultural heritage are revealed in a different light. A source of social links, a factor of essential values such as surpassing oneself while respecting others, team spirit, solidarity and togetherness, it is important to promote sport, especially in this time of health crisis which we hope is behind us. Thank you to the organisers and to all the volunteers for their investment and their enthusiasm in the service of a regional and popular event open to all. Let us wish great success to this new edition of the RED ROCK CHALLENGE and full satisfaction to the participants.

Anouk Boever-Thill
President of PRO-SUD
www.minett-biosphere.com

RED ROCK CHALLENGE 2021

The upcoming edition of the Red Rock Challenge is planned for the 9 & 10 October 2021.

WHAT DOES THE RED ROCK CHALLENGE STAND FOR?

The Red Rock Challenge is a combination of sporting and cultural event in southern Luxembourg. Whether you are for Mountain biking or Trail Run, this challenge offers the participants to discover the great wealth of industrial and natural heritage of the communes of the former mining area.

DISCOVER SOUTHERN LUXEMBOURG

The Red Rock Challenge 2021 departs from Belval (for most of the races) and connects, like every year, the region's major tourist points such as Little Italy in Dudelange, the National Mining and Iron Museum in Rumelange, the Information Centre Ellergronn in Esch/Alzette and the Industrial and Railway Park Minett-Park in Differdange/Pétange, which will act as relay points and water stops along the route. The various tracks will lead the participants through the natural reserves of Haard, Hesselbiérg, Steebiérg, Lalléngérbieerg and Giele Botter to arrive at the Lycée Belval where a festive gathering awaits participants at the end of the competitions. Lycée Belval is the Arrival / Departure area (for most of the races) which offers a cloakroom & warm shower as well as a bike wash. So enjoy and relax.

WHO CAN PARTICIPATE?

The Red Rock Challenge is open to people of all ages* and all levels. Participants can register individually or depending on the event (X-Duathlon) as teams of two or three competitors. All participants have the opportunity to take part in 1 event or to combine 2 different events one on Saturday and the second one on Sunday. Departures will be adjusted to allow for competitors of all levels to manage their race individually.

RACE & TOUR

As always the mountain bike races can also be run as a «**tour**» without time measurement. However, the marathon MTB 76 km and MTB 61 km are the two «**Cyclosportive**» races, thus with time measurement. Podium and prizes are only available for time measured races. So every participant can discover the landscapes on his own pace - race or tour - you choose.

2 DAY MTB CHALLENGE

This challenge for mountain bikers gives the possibility to ride two races in two different days. The 39 km will be on Saturday and the 76 km on Sunday. This race will reward the most tough riders! Are you steel enough?

*General rules , age restrictions

A COVID-CHECK EVENT

To guarantee the safety of the participants and to stay Covid free, we apply the Covid Check. The concept will be as follows:

To guarantee the safety of the participants and to stay Covid free, we apply the Covid Check. The concept will be as follows:

- You will have to carry your certificate that you are either vaccinated, recovered from the illness or tested. Link: covid19.public.lu/en/covidcheck/certificate.html
- We will NOT offer some kind of "fast tests", please foresee to have a PCR test
- You will NOT be able to enter the area without a negative certificate
- Normal races and trails will be available in a common starting block, everyone will start at the same time, but you need to keep a minimum distance of 2m
- You will have to carry and to wear your mask at the following places and every time you can't respect the 2m rule: starting block, refreshment points, finishing line

What happens if we need to cancel the event?

You have different options that you can choose from when you register online:

1) You can participate automatically to a «Virtual»* edition like the previous edition. The organisation Agora Red Rock Challenge will send back a certain percentage of the registering fees.

3) You can transfer the booking automatically to the next edition of the Agora Red Rock Challenge the following year. In this case, you will not receive any refund.

3) You can donate your participation fees to our partner «Fondation Kribskrank Kanner» (supporting children with cancer illness).

* Virtual edition: Full signed tracks, medal, special gift for participants. Each MTB track of the Agora Red Rock Challenge will be possible & the 10,5 km RunTrail

WHAT ABOUT THE FEES?

You can book your races by credit card on our webpage: www.rr-challenge.lu or use the late on site subscription possibility during the race weekend at the Lycée Belval.

WHERE DO I FIND THE TRACKS?

Every track can be downloaded from our web page in multiple formats: www.rr-challenge.lu

WHAT TO DO DURING THE EVENT?

FIND A FRIENDLY ATMOSPHERE

At the Red Rock Challenge starting point (Lycée Belval) you will find:

- drinks, food & music
- a test-bike area will be in place with even some e-bikes
- mechanical support from Fast Forward Suspension on-site
- information stands from our partners

ENJOY THE RICH BIODIVERSITY OF THE MINETT

Last October, the Minett region was accepted into the UNESCO programme «Man And The Biosphere» and is thus a member of the worldwide network of UNESCO biosphere reserves. The region's old open-cast mining areas impress with their enormous biodiversity, which developed when nature reclaimed these areas that had been transformed by man. Detailed information on the various protected areas of the Minett UNESCO Biosphere and the projects taking place in the country's first and only UNESCO Biosphere Reserve can be found online and on social media.

Info: Minett UNESCO Biosphere:
www.minett-biosphere.com
Facebook: @MUBbySyndicatProSud
Instagram: minettunescobiosphere

COME AND VISIT THE BLAST FURNACE AT BELVAL !

A beautifully arranged new urban area that integrates the industrial remains awaits you. Until October 31st, the blast furnace «A» is open to visitors until the platform of the bigmouth to 40 m of height. Access is by foot on the stairs.

Address: Halle des poches à fonte / massenoire (in front of the Rockhal), avenue du Rock'n'Roll, L-4361 Esch-sur-Alzette
Registration required for guided tours.

Info: Le Fonds Belval
www.fonds-belval.lu
tél. 00352 26 840-1

REGULATIONS

BIB NUMBER

Participants in the Cross-duathlon (XD) must wear their bib number on the handlebars and the second bib number on their back during the bike part and change it to the chest during the running discipline. Participants in the trials bike (MTB) must wear their bib number on the handlebars. Participants in running events must wear their bib number on the chest. Wearing a bib is mandatory. Participants taking part without their bib will be disqualified and excluded from the race.

TRANSFER AREA CROSS DUATHLON

During the transfer, it is strictly forbidden to ride the bike in the transfer area, the bike must be pushed by the hand of the participant. Wearing the helmet in the bike park is mandatory.

HELMET / EQUIPMENT

Participants must ensure that their equipment is in good condition. Cyclo-cross or Gravel-bikes bikes type are prohibited for the MTB or X-Duathlon races. E-bikes are allowed for the MTB tours, but not the races. Wearing a helmet is mandatory. The organizer of the Red Rock Challenge disclaims all liability for any accident, injury or property damage. The organizer shall in no event be liable for physical injury and / or property related to a fall, for whatever reason.

CHRONOMETRY

A chip will be integrated onto the bib number thus all the participants have to wear their bib as the integrated chip allows the time measurement with the chronograph. Teams will receive only one bib with integrated chip. The bib has to be handed over to the next team member into the transition zone. Without chip, the route will not be timed thus the participant will not be included in the classification.

COURSE REGULATIONS

The maximum running time for each race is defined. Participants who exceed this time limit will not be included in the final standings. At the end of the predefined time a «bike broom» signals the end of the race. Participants wishing to continue beyond this time frame will be subject to the rules of the road and finish the race under their own responsibility. Cyclists who are forced to set foot must leave room for other competitors to pass on their left. All participants are asked to remain vigilant on public roads and pay attention to traffic since cars / shuttles will continue to operate on the route. Road safety will be ensured by the Luxembourgish Police. The Luxembourg Civil Protection, assisted by one or more physicians, will provide the medical service. Officials at Red Rock Challenge have subscribed to a civil responsibility insurance policy «RC Organizers» kind.

UCI

The national Championship of the XC (Marathon) race will be organised under the current general UCI rules.

RESPECT OF THE ENVIRONMENT / NATURE

Participants are asked to respect the environment. All waste must remain in the staging area and possibly disposed in the recycling bins. Participants are requested not to leave the designated trails otherwise they will be disqualified.

HEALTH

Participants take part in the competition at their own responsibility. The organizer cannot be held responsible for any accident or event caused by bad health or by individual gear. Participants who decide to abandon the race are asked to go to the nearest refreshment stand in order to catch the shuttle to be brought back to the finish line. No refund will be paid in case of illness.

CANCELLATION OF THE EVENT

In case of force majeure, natural disasters or other circumstances that endanger the safety of the participants, the organizers reserve the right to cancel the event without any refund to the participants. No refund will be paid in this case.

PANDEMIC SITUATION

The physical edition might be cancelled and replaced by a virtual edition during a pandemic situation. In this case, participants are free to convert his registering fee into a virtual participation. We will ensure to give a certain amount of cash back. People, which don't like to register to a virtual race, can report the enrolment automatically to the next edition. If the sanitary situation requires it, you have to wear your mask and respect social distancing of 2m.

CLOAKROOM / BIKE PARK (XD)

A cloakroom / shower area is at the disposal of the participants to store their clothes at the time of the race. The organizers strongly recommend that participants do not leave valuables and disclaim any liability in case of theft or loss. The organizer will reserve the right to close the cloakroom if the sanitary situation requires it. To enter the bike park participants must show their bib number, which must match the bib number on the bike before access is granted. Without a bib bikes cannot be put in or out of the park. The organizer disclaims all responsibility for any damage to the equipment or other.

AGE RESTRICTIONS

Each participant recognizes and will respect the general age restrictions as set by the FLA, FLTRI and FSCL for endurance races.

MEDIA

Each participant allows Red Rock Challenge asbl to use his/her picture, audio and video recordings for marketing terms.

FINAL REMARKS

Participants acknowledge that they have read these regulations and accept all the clauses.

PARTNERS

MAIN

AGORA (PARTENAIRE GOLD) > www.agora.lu
Pro-sud (PARTENAIRE REGION) > www.minett-biosphere.com

FINANCIAL PARTNERS

Asport > www.asport.lu
Emile Weber > www.voyages-weber.lu
Ford Luxmotor > www.luxmotor.lu
Sudgaz > www.sudgaz.lu
Ministère de l'économie (Direction générale du tourisme)
> www.visitluxembourg.com

CO-PARTNERS

Cercle Athlétique Belvaux > www.cab.lu
Cercle Athlétique Fola > www.cafola.lu
Cycling for Health > www.cycling4health.lu
Driebergse Tourclub > www.dtcnet.nl
Team Toproad > www.toproad.lu

EVENT PARTNERS

Centre d'Accueil Ellergonn > www.environnement.public.lu
Delhaize Belval > www.delhaize.lu
Fastforward suspension > fastforward-suspension.de
Fit Doheem > www.fitdoheem.lu
FSCL > www.fscl.lu
Fox beer > www.foxbeer.lu
Lëtzbuerger Guiden a Scouten > lgs.lu
Lycée Belval > www.lbv.lu
Musée National de Mines de Fer Luxembourgeoises > www.mnm.lu
Parc Industriel, naturel et ferrovaire > www.minettpark.lu

LOGISTIC & COMMUNICATION

Fiduciaire Muller & Associés > www.paddock.eu
Fontana > www.fontana.lu
Sensity > www.sensity.eu

For more information and updates please visit our website:
www.rr-challenge.lu

ENCOURAGE THE ATHLETES

Follow the live event and support the athletes :
(estimated program)

SATURDAY 09 OCTOBER - RUN TRAIL DAY

DIFFERDANGE : MINETT-PARK

MTB 10:20
X-Duathlon (MTB) 10:18
X-Duathlon (Run) 11:00

BELVAL : FINISH

MTB head of the race: 11:00
X-Duathlon head of the race: 11:40
RT 29 km: head of the race: 14:58
RT 19,2 km: head of the race: 15:18
RT 10,5 km: head of the race: 15:44

SUNDAY 10 OCTOBER - MTB BIKE DAY (NATIONAL CHAMPIONSHIP)

RUMELANGE : MUSÉE NATIONAL DES MINES

MTB 61 & 76 km : head of the race : 10:34

DUDELANGE : QUARTIER ITALIEN

MTB 61 & 76 km: head of the race: 10:55

KAYL : LÉIFRÄCHEN

MTB 61 & 76 km : head of the race : 11:27

ESCH : POTEAU DE KAYL

MTB 61 km: head of the race: 11:39
MTB 76 km : head of the race : 12:08

ESCH : STADE FOLA/PARC GAALGEBIERG

MTB 61 km: head of the race: 11:47
MTB 76 km : head of the race : 12:17

BELVAL : FINISH

MTB 61 km: head of the race : 12:11
MTB 76 km : head of the race : 12:40

CONTACT

INFO@RR-CHALLENGE.LU
WWW.RR-CHALLENGE.LU
TEL : +352 621 352 801

4, RUE DU CIMETIÈRE
L-3913 MONDERCANGE
LUXEMBOURG

POST: LU691111 7007 7951 0000
RCSL: F8736

IMPRESSUM

Editor

Red Rock Challenge asbl

General Coordination

Marc Bourscheid coordination

Visual Concept

Sensity

ALL RIGHT RESERVED.
NO PART OF THESE PAGES, EITHER TEXT OR IMAGE
MAY BE USED FOR ANY PURPOSE OTHER THAN PERSONAL USE.



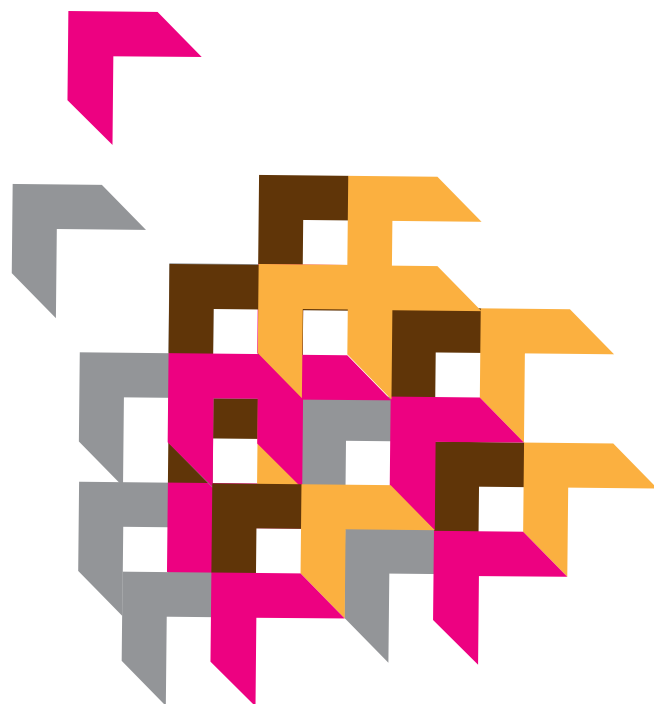
PRO-SUD - MINETT UNESCO BIOSPHERE SUPPORT RED ROCK CHALLENGE

MINETT UNESCO BIOSPHERE
TERRE D'AVENIR.
NATUR A MËNSCH. ZESUMMEN.

pro
sud

MINETT UNESCO BIOSPHERE

PROGRAM 2021



08
OCTOBER
FRIDAY

Handing out of the bib numbers
& late entries.

Lycée Belval From: **18h00**

Until: **20h00**

TRAIL RUN DAY / X-DUATHLON

Handing out of the bib numbers
& late entries.

Lycée Belval From: **08h00**

Until: **16h00**

TRAIL RUN

10,5 KM Single

Start: Lycée Belval **15h00**
Finish: Lycée Belval

Podium **16h30**

TRAIL RUN

19,2 KM Single

Start: Fond-De-Gras **14h00**
Finish: Lycée Belval

Podium **15h30**

TRAIL RUN

29 KM Single

Start: Fond-De-Gras **13h00**
Finish: Lycée Belval

Podium **16h00**
End of race **18h00**

X-DUATHLON

Single / Team of 3
Stage details: MTB **21,2 KM** +
RunTrail **9,6 KM** + MTB **18,2 KM**

Start: Lycée Belval **09h30**
Finish: Lycée Belval

Podium **14h00**

MTB RACE

39,5 KM Single
Time measurement
2 Day MTB Challenge (first day)

Start/Finish:
Lycée Belval **9h30**

End of race **18h00**

MTB DAY

Handing out of the bib numbers
& late entries.

Lycée Belval From: **08h00**

Until: **09h00**

MTB TOUR

40 KM

Start/Finish: Lycée Belval
10h00 - 11h00

MTB TOUR

61 KM

Start/Finish: Lycée Belval
10h00 - 11h00

MTB RACE

61 KM Time measurement

Start/Finish: Lycée Belval
10h00 - 11h00

Podium **13h30**

MTB TOUR - "MARATHON"

76 KM

Start/Finish: Lycée Belval
10h00 - 11h00

MTB RACE - "MARATHON"

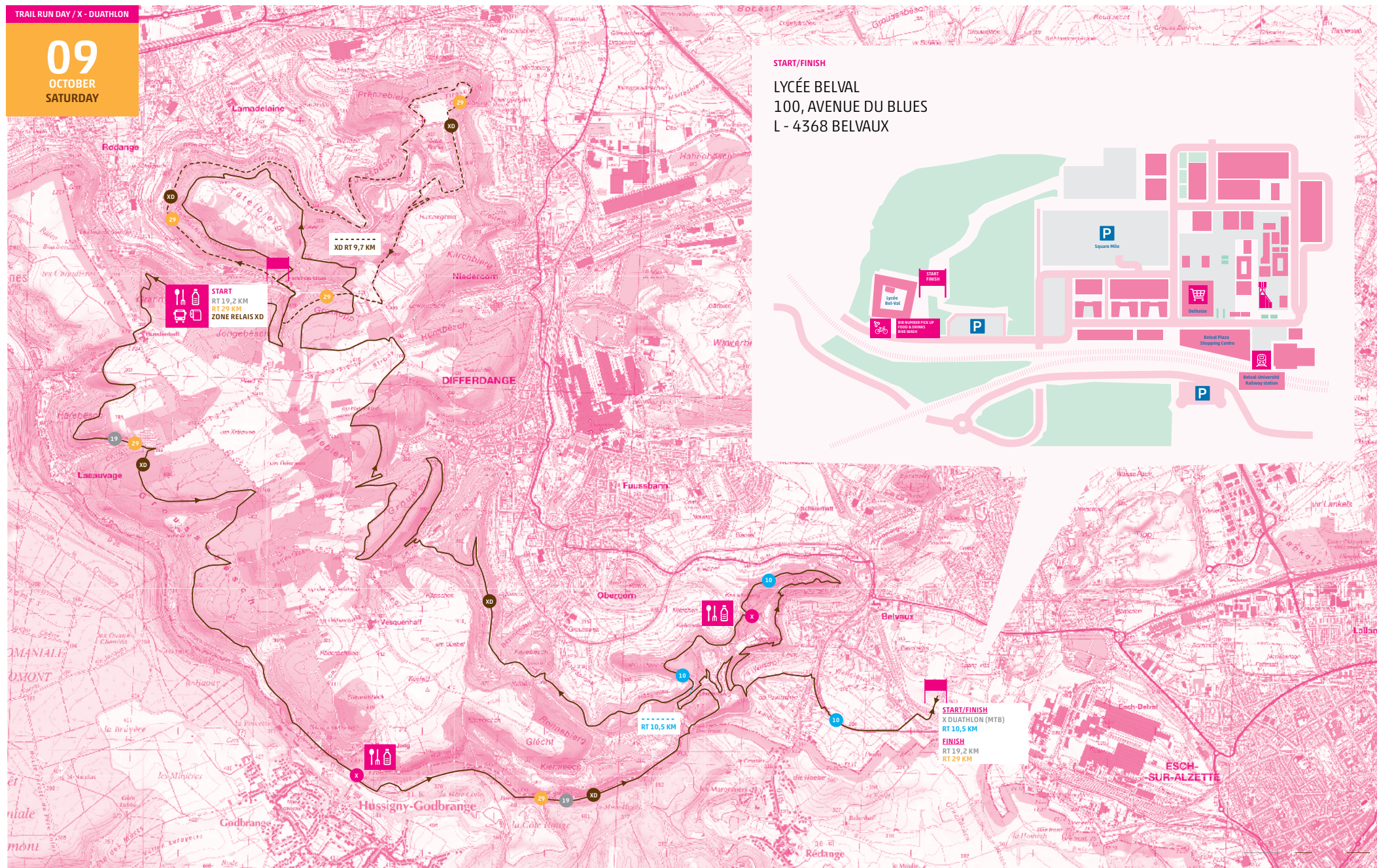
76 KM Time measurement
(part of 2 Day MTB Challenge
& National XCM Championship)

Start/Finish: Lycée Belval
10h00

Podium **13h30**
End of race **17h00**

10
OCTOBER
SUNDAY

09
OCTOBER
SATURDAY

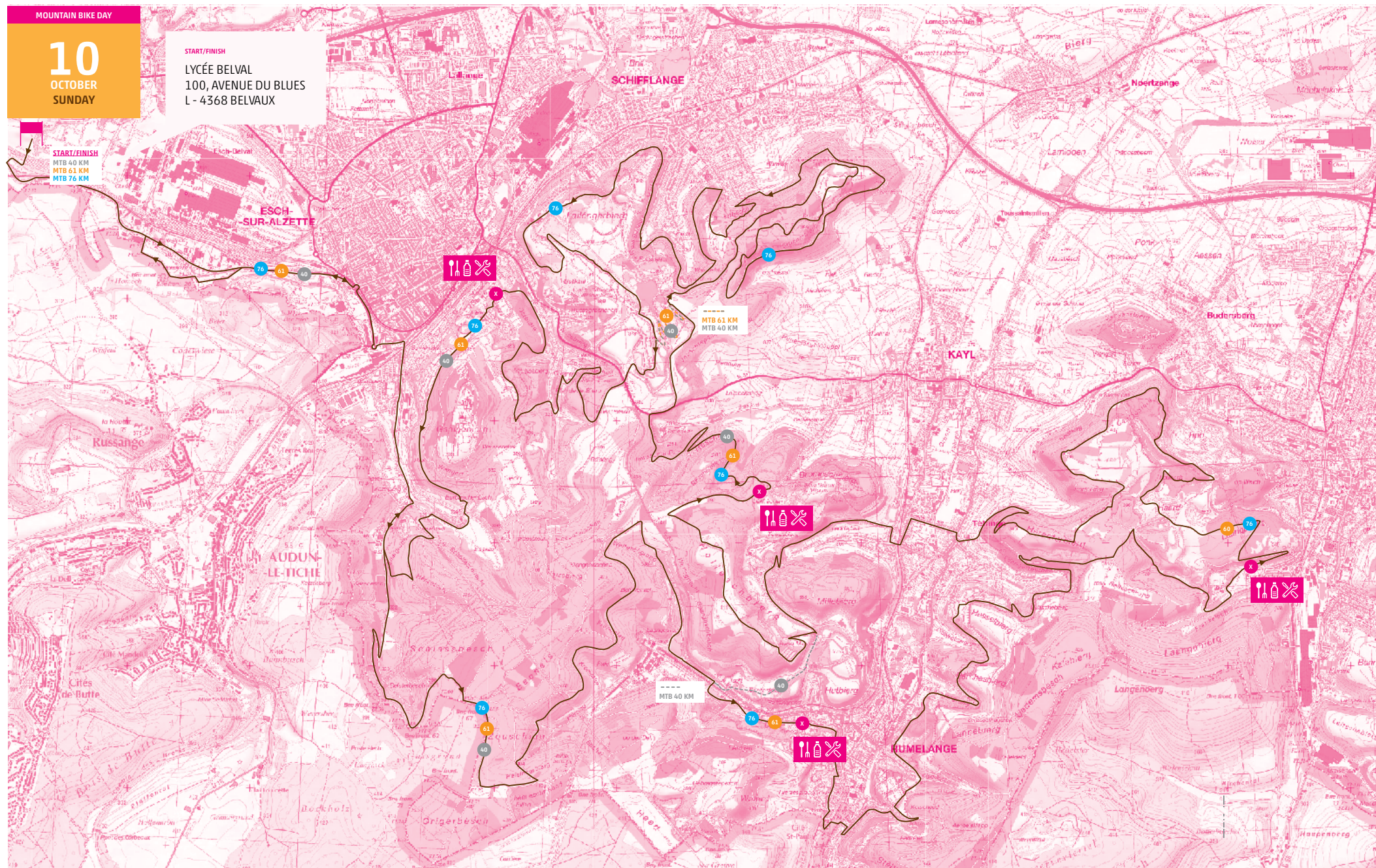


10
OCTOBER
SUNDAY

START/FINISH

LYCÉE BELVAL
100, AVENUE DU BLUES
L - 4368 BELVAUX

START/FINISH
MTB 40 KM
MTB 61 KM
MTB 76 KM



Note importante
Championnat XCM

Les coureurs seront accompagnés par la police au Start sur une distance de plus au moins 5km. Un dépassement des forces de l'ordre sera puni par disqualification immédiate du coureur. Le Start fictif sera donné dès que les cyclistes rentreront dans la forêt.

Note importante 2
Inscriptions tardives

La remise des dossards pour chacune des épreuves ainsi que toute inscription tardive que se termine à 1 heure avant le Start d'épreuve.

Note importante 3
Distances épreuves

L'organisation se réserve le droit de raccourcir ou de rallonger légèrement les parcours si nécessaire: sécurité ou autre.

www.geoportail.lu est un portail d'accès aux informations géolocalisées, données et services qui sont mis à disposition par les administrations publiques luxembourgeoises. Responsabilité: Malgré la grande attention qu'elles portent à la justesse des informations diffusées sur ce site, les autorités ne peuvent endosser aucune responsabilité quant à la fidélité, à l'exactitude, à l'actualité, à la fiabilité et à l'intégralité de ces informations. Information dépourvue de foi publique.

Droits d'auteur: Administration du Cadastre et de la Topographie.
http://wiki.geoportail.lu/doku.php?id=fr:mcg_1